

# SPEED Student COVID-19 FLOW CHART

## COVID-19 SYMPTOMS

- Fever > 100.4F
- New Headache
- Shortness of breath
- New cough
- Sore throat
- Vomiting
- Diarrhea
- New loss of taste or smell
- Fatigue
- Muscle or body aches

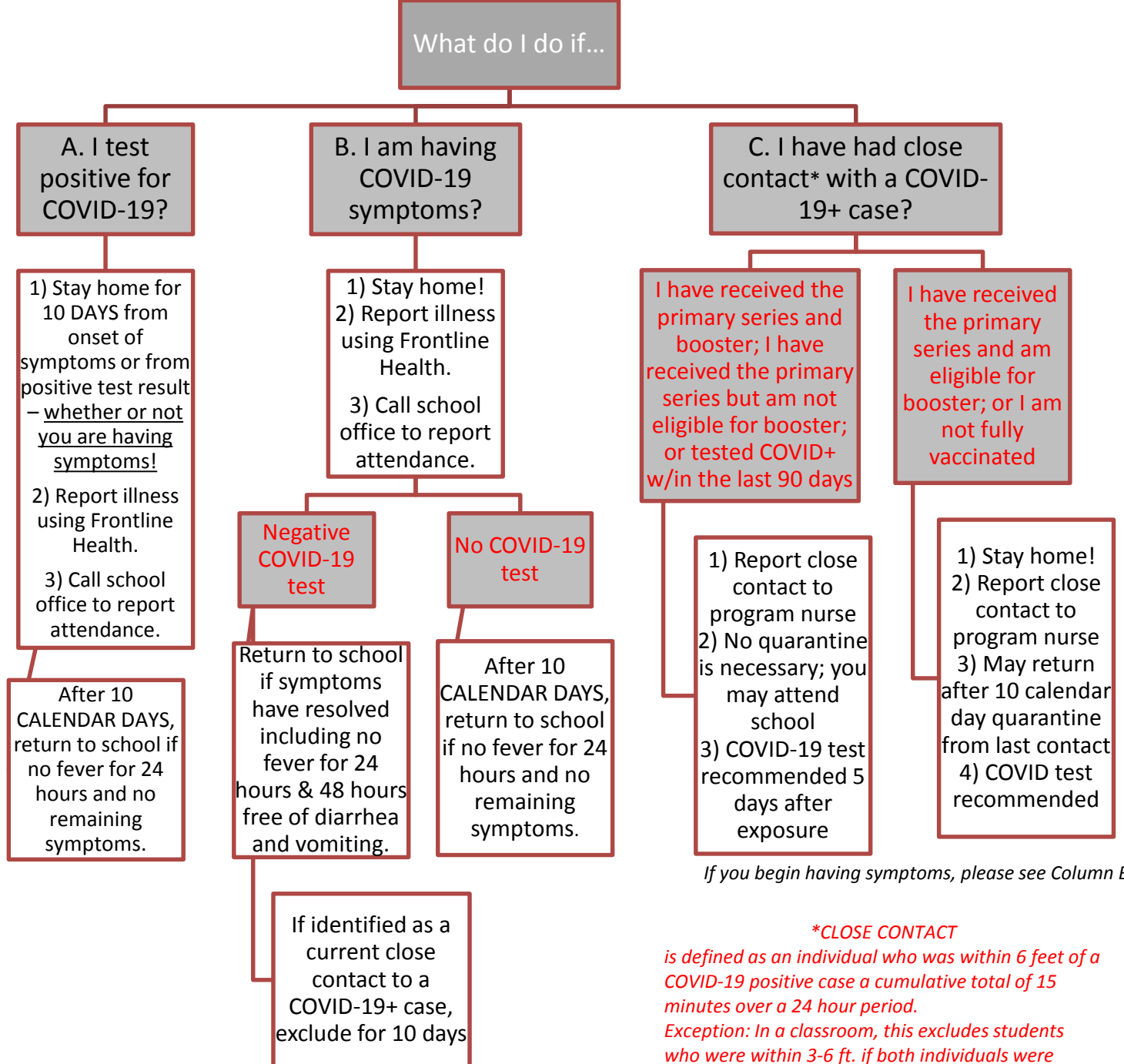
## ATTENDANCE LINES:

Academy for Lifelong Learning – 708-481-0505

Early Learning Center – 708-481-6101

Independence School – 708-481-6103

Program for Adaptive Learning – 708-481-6102



*\*CLOSE CONTACT is defined as an individual who was within 6 feet of a COVID-19 positive case a cumulative total of 15 minutes over a 24 hour period. Exception: In a classroom, this excludes students who were within 3-6 ft. if both individuals were properly masked.*