

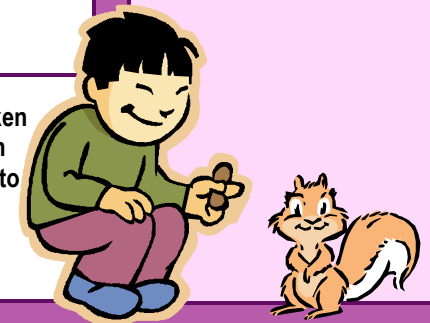
# October 2010

**SPEED District 802**



**All meals include fruit and milk**

**Pizza and cheeseburgers available daily**



**MONDAY**

**TUESDAY**

**WEDNESDAY**

**THURSDAY**

**FRIDAY**

				<b>1</b> Breaded Chicken Patty on Bun Lettuce/tomato Tater tots
<b>4</b> Cheese Ravioli Green Beans Cookie	<b>5</b> Nacho Plate Refried Beans	<b>6</b> Pork Ribette Baked Beans	<b>7</b> No Lunch Served	<b>8</b> No Lunch Served
<b>11</b> Holiday No Lunch Served	<b>12</b> Meat Ball Sandwich on Roll French Fries Fruit Icee	<b>13</b> Chicken Rings Dipping Sauce Pasta Salad Cookie	<b>14</b> Pepperoni Pizza Bread Tossed Salad	<b>15</b> Fish Square On Bun Cole Slaw
<b>18</b> Chicken Chalupa Lettuce Spanish Rice	<b>19</b> Chicken Nuggets Dipping Sauce Baked Beans Cole Slaw	<b>20</b> Spaghetti With Meat Sauce Tossed Salad Garlic Toast	<b>21</b> Hot Dog on Bun Tater Tots	<b>22</b> Hot Ham & Cheese French Fries
<b>25</b> Corn Dog Cole Slaw	<b>26</b> Mosticcoli Tossed Salad Garlic Bread	<b>27</b> Beef Tacos Refried Beans	<b>28</b> Pizza Puff Tossed Salad	<b>29</b> Breaded Chicken Patty on Bun Lettuce/Tomato Tater Tots

Enter Other Information Here